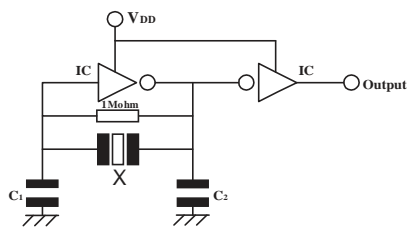


Ceramic Resonator - ZTB-series

Specifications

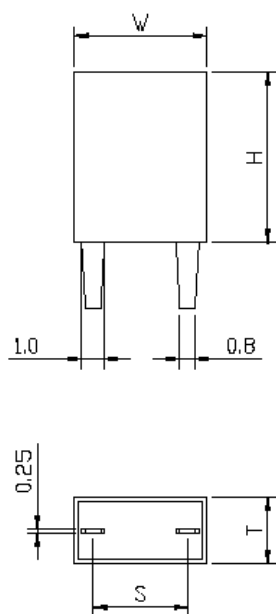
Parameters	Standard	Options
Frequency range	190 kHz - 1250 kHz	
Operating temperature	-20°C ~ +80°C	Other
Storage temperature	-40°C ~ +85°C	
Frequency tolerance at 25°C	± 1,0 kHz - ± 2,0 kHz	Other
Frequency stability over temp. range	± 0,3 %	Other
Aging over 10 years	± 0,5 %	
Marking	Frequency	
Package		
190 kHz - 374 kHz	ZTB-D	
375 kHz - 429 kHz	ZTB-P	
430 kHz - 509 kHz	ZTB-E	
510 kHz - 699 kHz	ZTB-P	
700 kHz - 1250 kHz	ZTB-J	

Testcircuit



Ceramic Resonator - ZTB-series

Drawing



Code	W	H	T	S
ZTB_D	13.5	14.7	3.8	10.0
ZTB_P	7.9	9.3	3.6	5.0
ZTB_E	7.9	9.3	3.6	5.0
ZTB_J	5.0	6.0	2.2	2.5