

SX5CT OSCILLATOR



Specifications

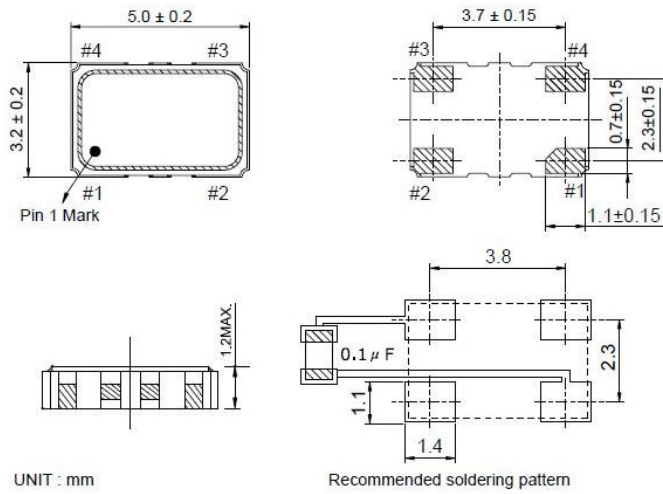
Parameters	Standard	Options
Frequency range	4.75 MHz - 54,000 MHz	
Logic output	HCMOS	
Frequency stability		
Overall including 10 years aging	± 10.0 ppm	± 20.0 ppm
Initial at 25°C	included	
Temperature	included	
vs supply voltage change	included	
vs load change	included	
Aging over 10 years	included	
Operating temperature	-20° C ~ +70° C	0° C ~ +50° C
		-10° C ~ +60° C
		-40° C ~ +85° C
Storage temperature	-55° C ~ +125° C	
Supply voltage	3,3 V ± 5%	
Current	7,0 mA max	
Duty Cycle	45 / 55 %	
Rise/fall times	6 ns max.	
Load	15 pF	
Jitter	Please specify (if required)	
Phase noise		
Harmonics		
Sub-harmonics		
Start-up time	8 ms max.	
Tristate	High or open = enable	
	Low = disable	
Marking	Freq + Code + Week +Year	

SX5CT OSCILLATOR

Specifications

Drawing

Package SX5



pin configuration

#1 : E/D
#2 : GND
#3 : Output
#4 : Vcc